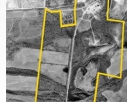




Jasper Industrial Park
Industrial Blvd
Jasper, TN 37347



This site is 200 acres. It offers 1/2 mile of river frontage with barge access (10) 1/2 mile of road frontage and other parcels available. The site is 1/2 mile from I-24 and only 25 miles from Chattanooga Tennessee home of Volkswagen USA.

ED Contact

Stephanie Watkins, SEIDA Program Director
Southeast Industrial Development Association
1000 Riverfront Parkway
Chattanooga, TN 37402
Phone: 423.424.4243
Email: swatkins@sedev.org

| Land Information | | | |
|---------------------------|-------------|---------------------------|------------------|
| Land Types: | Vacant Land | Zoning: | Heavy Industrial |
| Property ID: | 5248 | Updated: | 11/9/2016 |
| County: | Marion | Ownership: | private |
| Site Size (acres): | 225 | Maximum Contiguous Acres: | 200 |
| Total Available (acres): | 200 | Minimum Subdivide: | 10 |
| Business/Industrial Park: | Yes | | |

| Pricing Terms | | | |
|---------------|-----|------------|----|
| For Sale: | Yes | For Lease: | No |

| Geographic/Transportation Information | | | |
|---------------------------------------|------------|------------------------|--------------------------------------|
| Latitude: | 35.046221 | Airport Name: | Chattanooga Metropolitan |
| Longitude: | -85.642559 | Distance to Airport: | 32 |
| Rail Access: | Yes | Airport Name 2: | Chattanooga Metropolitan |
| Phase 1 Environmental Rpt: | Yes | Distance to Airport 2: | 32 |
| Highway Name: | 41 | Distance to Port: | 5 |
| Distance to Highway: | 2 | Distance to Port 2: | 5 |
| Highway Name 2: | 41 | Rail Name: | Sequatchie Valley Railroad Authority |
| Distance to Highway 2: | 2 | Distance to Rail: | 0 |
| Interstate Name: | I-24 | Rail Name 2: | Sequatchie Valley Railroad Authority |
| Distance to Interstate: | 0.01 | Distance to Rail 2: | 0 |

| Utility Information | | | |
|-------------------------------------|--|------------------|----------------|
| Service to Property (Distribution): | Yes | Water Provider: | City of Jasper |
| Electric Provider: | Sequatchie Valley Electric Cooperative | Water Main Size: | 7 |
| Gas Provider: | Yes | Sewer On Site: | Yes |
| Size of Gas Main: | 2 | Sewer Provider: | City of Jasper |
| Telecom Provider: | AT&T | Sewer Main Size: | 8 |
| Water On Site: | Yes | | |

Additional Information

Region: SE Valley



Southeast Industrial Development Association
1000 Riverfront Parkway, Chattanooga, TN 37402 | 423-424-4245 | kjohnson@sedev.org

Material on this website is protected by copyright and trademark laws. The information contained in this website or linked sites is provided on an "as is" basis. We make no guarantee or representation about the accuracy or completeness of the information, and disclaim all warranties, express or implied, including but not limited to warranties of merchantability, fitness for a particular purpose and non-infringement. We are not responsible for any damages arising from the use of information on this site. It is your responsibility to independently investigate the information's accuracy and completeness, and to determine to your satisfaction the suitability of the property for your needs. Any projections, opinions, assumptions or estimates used are for example only and do not represent the current or future performance of any property.