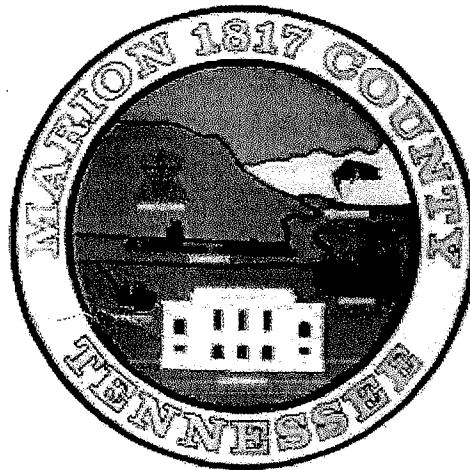


# Marion County, Tennessee

## ADA Self-Evaluation & Transition Plan



David Jackson, County Mayor  
2019

# Marion County ADA Self-Evaluation & Transition Plan 2019

## Table of Contents

1. County Self-Evaluation & Transition Plan
2. Table 1: Description of County Owned Properties
3. Table 2: List of County Roads
4. ADA Checklist
5. ADA Statutes

## **Marion County ADA Self-Evaluation & Transition Plan**

### **INTRODUCTION**

The Americans with Disabilities Act (ADA) is a civil rights law that mandates equal opportunity for individuals with disabilities. The ADA prohibits discrimination in access to jobs, public accommodations, government services, public transportation and telecommunications. Marion County has undertaken a comprehensive re-evaluation of its policies, programs and facilities to determine the extent to which individuals with disabilities may be restricted in their access to County services, activities and facilities.

This document describes the process developed to complete the evaluation of Marion County activities, provides policy and program recommendations and presents a Transition Plan Update for the modification of facilities, public rights-of way and programs to ensure accessibility.

This document will guide the planning and implementation of necessary program and facility modifications over the next several years. The ADA Self-Evaluation and Transition Plan Update is significant in that it establishes Marion County's ongoing commitment to the development and maintenance of policies, programs and facilities that include all of its citizenry.

#### **Federal Accessibility Requirements**

The development of a transition plan is a requirement of the federal regulations implementing the Rehabilitation Act of 1973, which require that all organizations receiving federal funds make their programs available without discrimination to persons with disabilities. The Act, which has become known as the "civil rights act" of persons with disabilities, states that: No otherwise qualified [disabled] individual in the United States shall, solely by reason of [disability], be excluded from the participation in, be denied the benefits of, or be subjected to discrimination under any program or activity receiving federal financial assistance. (Section 504)

Subsequent to the enactment of the Rehabilitation Act, Congress passed the Americans with Disabilities Act on July 26, 1990. The Department of Justice's Title II regulation adopts the general prohibitions of discrimination established under Section 504 and incorporates specific prohibitions of discrimination for the ADA. Title II provides protections to individuals with disabilities that are at least equal to those provided by the nondiscrimination provisions of Title V of the Rehabilitation Act. This legislative mandate, therefore, prohibits the County from, either directly or indirectly through contractual arrangements:

Denying persons with disabilities the opportunity to participate in services, programs, or activities that are not separate or different from those offered others, even if the offers permissibly separate or different activities.

#### **Title II Requirements**

## **Marion County ADA Self-Evaluation & Transition Plan**

Marion County is obligated to observe all requirements of Title I in its employment practices; Title II in its policies, programs and services; any parts of Titles IV and V that apply to Marion County and its programs, services or facilities; and all requirements specified in the Americans with Disabilities Act Access Guidelines of 2004 (ADAAG) that apply to facilities and other physical holdings.

Title II has the broadest impact on Marion County. A self-evaluation is required and intended to examine programs, activities and services, identify problems or physical barriers that may limit accessibility by the disabled and describe potential compliance solutions.

Included in Title II are administrative requirements for all government entities employing more than fifty (50) people. These administrative requirements are:

- Designation of a person who is responsible for overseeing Title II compliance;
- Development of an ADA complaint procedure;
- Completion of a self-evaluation; and
- Development of a transition plan if the self-evaluation identifies any structural modifications necessary for compliance. The transition plan must be retained for three years.

### **ADA Coordinator**

In 2019, the County Mayor designated Ms. Denise Mason– as the ADA Coordinator. This position is responsible for ensuring that all programs, services and activities of Marion County are accessible to and usable by individuals with disabilities. The County’s ADA Coordinator is:

Ms. Denise Mason  
Marion County Courthouse  
Jasper, TN 37347  
423-942-2552  
dmason@marioncountyttn.net

To request an ADA accommodation or file an ADA grievance, contact the ADA Coordinator and follow the established procedures outlined in the following section.

### **ADA Accommodation and Grievance**

Request for accommodations or barrier removals should be made to the ADA Coordinator, include the name, address and telephone number of the individual requesting the accommodation. The request should contain the location of the program, service, activity or facility where the accommodation is required and a description of why the accommodation is needed.

Within fifteen (15) calendar days of the written request, the ADA Coordinator will respond to the individual requesting the accommodation. If the response by the ADA Coordinator does

## **Marion County ADA Self-Evaluation & Transition Plan**

not satisfactorily resolve the issue, the individual making the request may file a formal grievance. All requests for accommodations received by the ADA Coordinator will be kept by Marion County for at least three (3) years.

### **Filing an ADA Grievance**

Marion County has adopted a formal grievance procedure providing for prompt and equitable resolution of complaints alleging any action prohibited by Title II of the ADA and state disability rights. This procedure is available for any individual who wishes to file a complaint alleging discrimination on the basis of their disability in the provision of services, activities, facilities and programs by Marion County.

The availability and use of this grievance procedure via submission of a complaint form does not preclude filing a complaint of discrimination with any appropriate state or federal agency. Use of this grievance procedure is not a prerequisite to the pursuit of other remedies.

### **The Written Complaint**

The complaint should contain as much information as possible about the alleged discrimination. The Complainant or his/her representative should file a complaint form with the ADA Coordinator no later than 45 days from the date of the alleged discrimination. The complaint should be in writing however, other arrangements for submitting a request, such as personal interviews, tape recordings and assistance completing the form is available upon request.

The ADA Coordinator will notify the Complainant in writing of any additional information that is needed to complete the complaint. If the Complainant fails to complete the complaint form, the ADA Coordinator shall close the complaint without prejudice.

### **Consideration of Grievance**

The ADA Coordinator will oversee the investigation of the complaint. Within thirty (30) days of receipt of the complaint, the ADA Coordinator or his or her designee will respond to the complaint in writing or a reasonable alternative format if requested. The response will explain the position of the County with respect to the complaint and offer options for a reasonable solution.

### **Appeal to the County Mayor**

If the response by the ADA Coordinator does not satisfactorily resolve the issue, the complainant may appeal the decision, within fifteen (15) calendar days after receipt of the response, to the County Mayor or an appointed representative.

Within fifteen (15) calendar days after receipt of the appeal, the County Mayor, or an appointed representative, will meet with or contact the complainant to discuss the complaint and possible resolutions. Within fifteen (15) calendar days after the meeting, the County

## **Marion County ADA Self-Evaluation & Transition Plan**

Mayor, or an appointed representative, will respond in writing or in a format accessible to the complainant of final resolutions to the complaint. All decisions by the County Mayor are final and there will be no right of appeal to the County Commission.

All written complaints received by the ADA Coordinator, appeals to the County Mayor and responses from the ADA Coordinator and the County Mayor, will be kept by Marion County for at least three (3) years.

### **Accommodation and Grievance Response**

In responding to request(s) for structural improvement brought through the ADA Accommodation and Grievance process, the ADA Coordinator is limited to the funds in established Capital Improvement Projects and other miscellaneous funds. In the event that these allocated funds are insufficient or already spent, subsequent improvements will be prioritized and scheduled in subsequent fiscal years.

### **ADA Self-Evaluation & Transition Plan**

The Self-Evaluation is the County's assessment of its current policies, practices and procedures. It identifies and corrects those policies and practices that are inconsistent with the requirements of Title II of the ADA.

In keeping with these requirements and as part of the Self-Evaluation, Marion County: Identified its current programs, activities and services; and reviewed the current policies, practices and procedures that govern the administration of its programs, activities and services.

The ADA also sets forth specific requirements for preparation of an acceptable Transition Plan. This report and certain documents incorporated by reference establish the ADA Self-Evaluation and Transition Plan Update for Marion County.

## **ADA SELF-EVALUATION AND TRANSITION PLAN: REVIEW & DEVELOPMENT**

The ADA is a comprehensive civil rights law for persons with disabilities in both employment and the provision of goods and services. The ADA states that its purpose is to provide a "clear and comprehensive national mandate for the elimination of discrimination against individuals with disabilities." Congress emphasized that the ADA seeks to dispel stereotypes and assumptions about disabilities and to assure equality of opportunity, full participation, independent living and economic self-sufficiency for people with disabilities.

This ADA Self-Evaluation and Transition Plan is prepared in fulfillment of the requirements set forth in Title II of the ADA. The ADA states that a public entity must reasonably modify its policies, practices, or procedures to avoid discrimination against people with disabilities. This update will assist the County in identifying current policy, program and physical barriers to accessibility and in developing barrier removal solutions that will facilitate the opportunity of access to all individuals.

## **Marion County ADA Self-Evaluation & Transition Plan**

This report describes an overview of the process by which policies, programs and facilities were evaluated for compliance with the ADA; presents the findings of that evaluation; and provides recommendations for ensuring accessibility. This part provides an overview of the process and development of the Self-Evaluation and Transition Plan.

### Discrimination and Accessibility

There are two types of accessibility: physical accessibility and program accessibility. Absence of discrimination requires that both types of accessibility be provided. The ADA establishes requirements to ensure that buildings and facilities are accessible to and usable by people with disabilities. Design guidelines to achieve accessibility have been developed and are maintained by the U.S. Access Board under the jurisdiction of the ADA. The ADA Accessibility Guidelines (ADAAG) cover a wide variety of facilities (including buildings, outdoor recreation areas and curb ramps) and establish minimum accessibility requirements for new construction and alterations to these facilities. The County may achieve physical accessibility by ensuring that a facility is barrier-free and meets ADAAG technical requirements, including those found in Title 24. Barriers include any obstacles that prevent or restrict the entrance to or use of a facility.

Programmatic accessibility includes physical accessibility, but also entails all policies, practices and procedures that permit people with disabilities to participate in programs and to access important information. Program accessibility requires that individuals with disabilities be provided an equally effective opportunity to participate in or benefit from a public entity's programs and services. The County may achieve program accessibility by a number of methods, both structural and nonstructural:

- Structural methods such as altering an existing facility;
- Acquisition or redesign of equipment;
- Assignment of aides; and/or
- Providing services at alternate accessible sites.

When choosing a method of providing program access, the County will give priority to the one that results in the most integrated setting appropriate to encourage interaction among all users, including individuals with disabilities. In compliance with the requirements of the ADA, the County provides equality of opportunity but does not guarantee equality of results.

### Undue Burden

The County does not have to take any action that it can demonstrate would result in (i) a fundamental alteration in the nature of a program or activity, (ii) would create a hazardous condition for other people, or (iii) would represent an undue financial and administrative burden. This determination can only be made by the ADA Coordinator or his or her designee and must be accompanied by a statement citing the reasons for reaching that conclusion.

## **Marion County ADA Self-Evaluation & Transition Plan**

The determination that an undue financial burden would result must be based on an evaluation of all resources available for use in a program. For example, if a barrier removal action is judged unduly burdensome, the County must consider other options for providing access that would ensure that individuals with disabilities receive the benefits and services of the program or activity.

### Procedures

When a policy, program or procedure creates an accessibility barrier that is unique to a department or a certain program, the County's ADA Coordinator will coordinate with the department head or program manager to address the matter in the most reasonable and accommodating manner.

### Development Process

Services and programs offered by the county to the public must be accessible. Accessibility applies to all aspects of a program or service, including advertisement, orientation, eligibility, participation, testing or evaluation, physical access, provision of auxiliary aids and transportation.

The process of making County facilities and programs accessible to all individuals will be an ongoing one and the County will continue to review accessibility issues such as resolution of complaints and reasonable modifications to programs. The County will also periodically evaluate the success of improving access to programs by the practices and procedures developed during the Self- Evaluation Update process.

The evaluation of the services and programs of Marion County included the following activities: review and update of general & department policies and review of published rules and regulations

## **INVENTORY AND SELF-EVALUATION**

The county completed a self-evaluation of all its public facilities to determine if there were any deficiencies in ADA accommodations.

### County-Owned Buildings

Table 1 lists the county-owned facilities that are currently open to the public and identifies any deficiencies of each facility regarding ADA accessibility. All county buildings have accessible parking lots and spaces that area designated with appropriate signage denoting the location of the accessible parking. Bathrooms are handicap accessible and contain the appropriate fixtures for handicap accessibility.

### County School System



## **Marion County ADA Self-Evaluation & Transition Plan**

The Marion County Board of Education (a locally elected body) owns, operates and maintains the elementary and secondary education facilities in the county. The Marion County Commission only has fiduciary responsibility regarding the maintenance of effort with the school system. The commission has requested the Board of Education complete an ADA self-evaluation and transition plan for the school system. Once the document is complete, it will be included in the overall county plan.

### County Roads and Highways

Most of the roads in the county are built to rural standards (i.e., no curbs, gutters or sidewalks) and therefore do not have curb ramps. The city and the state currently have ownership and maintenance responsibility for sidewalks in the public rights-of way. The majority of sidewalks built in the last 30 to 40 years were part of a subdivision development and the ownership of the sidewalks belong to the property owner or a homeowner's association. Table 2 contains a list of the county roads and condition of each road.

## **ADA TRANSITION PLAN**

### Overview

The goal of the Americans with Disabilities Act (ADA) Transition Plan is to ensure that the County creates accessible public facilities and accessible paths of travel in the public right-of-way for people with disabilities.

The County evaluated county facilities and pedestrian circulation paths for accessible features as required by the Americans with Disabilities Act (ADA) and its implementing regulations (28 CFR 35) and Section 504 (49 CFR 27). The evaluation included, but was not limited to, buildings, sidewalks, curbs, curb ramps, the portion of the street surface in the crosswalk area and pedestrian signals, and was based on the requirements in the "Public Right of Way Accessibility Guidelines" (PROWAG), dated July 26, 2011.

### Inventory

The inventory was based on the County's Self-Evaluation of locations where no ADA parking and/or accessible routes are provided to City facilities; where no curb ramps are provided at the intersection of existing sidewalks and public streets; where non-compliant curb ramps, sidewalks, and other features exist; and where existing features are in poor condition. Features may include, but are not limited to, parking, signage, sidewalks, curb ramps, the portion of the street surface in the crosswalk area and pedestrian signals. The evaluation was completed October of 2019 and will be updated every 2 years.

### Priorities

ADA upgrades and/or additions and other features will be installed or reinstalled in the locations identified in the Self-Evaluation according to the priorities established by an

## **Marion County ADA Self-Evaluation & Transition Plan**

interactive process with the county's elected officials and the public. The current priorities are tentatively set as:

- Parking affecting public safety
- Local government offices
- Local government facilities

### **Funding**

Funds are allocated in the capital budget every year for maintenance and renovation during the budgeting process. In the event funds are not available to accommodate a request, the County Mayor will submit the request to the County Commission. The commission will evaluate and prioritize the accommodation in the subsequent fiscal years.

### **Implementation Plan and Schedule**

The county will consider implementation based on the number of items identified in the ADA self-evaluation, estimated cost of those features, and funding as it become available and appropriate in the judgement of the county commission, balanced with county responsibilities and priorities.

### **Complaint Process**

The county has defined the compliant procedures to be followed to provide citizens the ability to file a complaint with the county for alleged ADA and Section 504 discrimination. This is included in the introduction of this document.

### **Public Involvement**

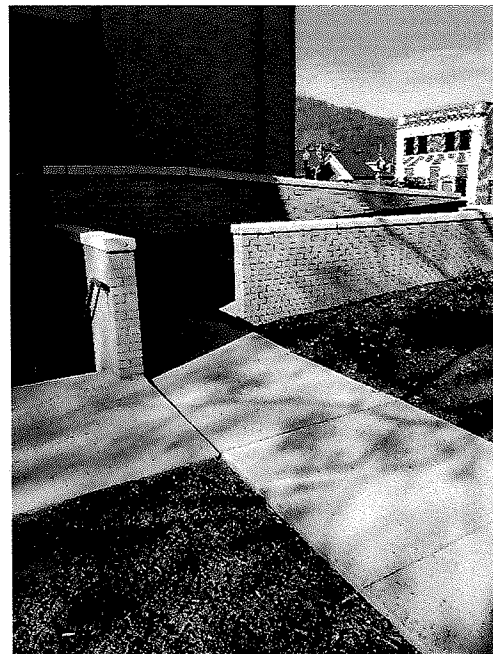
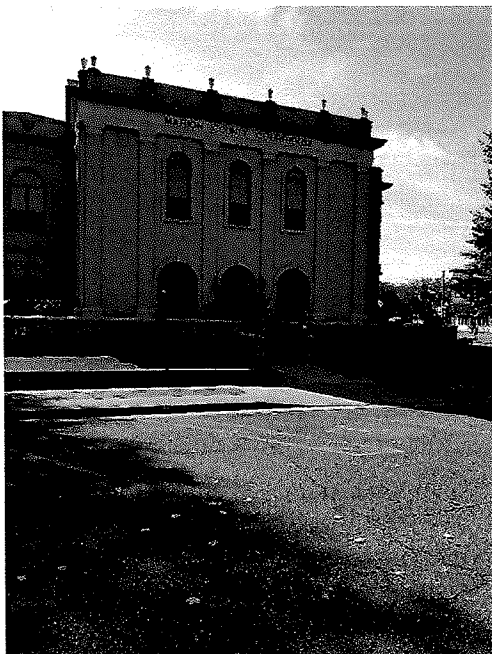
Public input is scheduled for review of this transition plan by soliciting comments from the county commission and the general public for 30 days in the 2019 calendar year. All comments will be reviewed and incorporated as appropriate.

**Table 1**

**County-owned Buildings and Property**

Marion County Courthouse

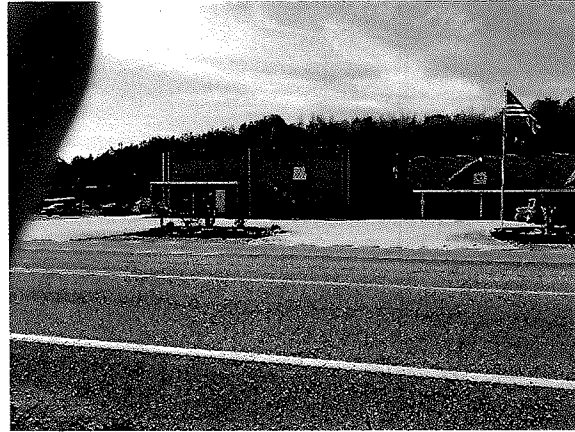
The Marion County Courthouse has been renovated to meet ADA requirements and all renovations of county property over the last 15 years has been designed to be ADA compliant. The courthouse is a two-story structure that has elevator service to both floors. There is an ADA entrance on Academy Street with curb ramps for access. It should be noted that the streets and sidewalks around the courthouse are owned by the Town of Jasper. A push-button is available at the ADA entrance and a ramp is available as well. Handicap accessible restrooms are located on each floor and clearly marked.



5520 Highway 41

The county owns two buildings at 5520 Highway 41 in the Town of Jasper. One building houses the Marion Juvenile Court and the other building is leased to the American Job Center. Both buildings have adequate ADA restrooms and parking. Both buildings were renovated to accommodate their use and ADA issues were corrected at that time. The Juvenile Court is ADA compliant within the framework of its intended purpose. There are very few areas completely open to the public due to court proceedings.

## Marion County ADA Self-Evaluation & Transition Plan 2019



### Marion County Courthouse Annex

The Courthouse Annex building houses the Marion County Planning Office and the Office of the Marion County Clerk. The building is located across 1<sup>st</sup> Street East from the courthouse. There are curb cuts for ADA access, and it should be noted the sidewalks and curbs are owned by the Town of Jasper. ADA accessible restrooms are available and other accommodation area made as necessary.



Lawson Building-300 Ridley Avenue

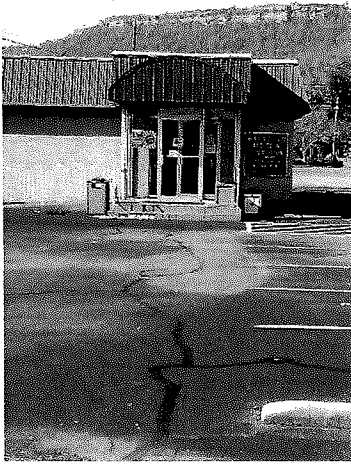
The county recently purchased and renovated the Lawson Building to accommodate the Marion County Commission's need for a larger meeting space. It was renovated in 2017 and is ADA compliant. It is a one-story brick building next to the Marion County High School. It also houses a training room for the Sheriff's Office and an Office for Veteran's Affairs.



Marion County Regional Higher Education Institute-Chattanooga State Campus

Marion County owns the property and buildings that house the Marion County campus of the Chattanooga State Technical and Community College. The campus currently consists of two buildings. The first building was completed in 2015 and provides general college instruction to complete technical certificates and associate degrees. The second building was completed in 2018 and provides classes in industrial maintenance and Information Technology. Both buildings were designed by architects and ADA compliance was part of the design process. All future development of the campus will be consistent with ADA compliance.

Marion County Election Commission Building



The Election Commission meets in a brick building located at 104 Academy Avenue in Jasper. It meets ADA requirements and is accessible. The wheelchair ramp is located at the front of the building.

Marion County Park

Marion County Park is located on Nickajack Lake off Highway 41. The park contains primitive campsites, RV hookups, a playground, and a fishing pier. An ADA compliant bathhouse is currently under construction. The park will continue to be evaluated for ADA compliance.



Other County Buildings

The county also owns the county health department, the Marion County Justice Center, The Marion County Airport and the Road Commission Building. The justice center was constructed in 2008 to Department of Corrections specifications and is ADA compliant within the framework of its intended purpose. There are very few areas completely open to the public in the justice center due to the housing of inmates and court proceedings. The health department was constructed in 2008 to ADA standards and is still compliant. The Marion County Airport is a general aviation airport that must meet Homeland Security standards so very few areas are open to the public. The Road Commission Building has few public areas and is the working shop for the road department. Any properties received by County for non-payment of taxes will be held and sold to a private developer as is in the near future. Therefore, no evaluation was completed on those properties.

Marion County will continue to evaluate and review its requirements under the American's with Disabilities Act to ensure compliance.

## Marion County Road Report

### Road Details By Road Name with Comments

Road	Beginning	Ending	Length (MI)	Right Of Way (FT)	Surface Width	Surface Type	Roadbed (FT)	Road Comm	Class
ABLES ROAD	BATTLE CREEK ROAD	DEAD END	0.20	16	12	P	14		3
AETNA HILL ROAD	AETNA MTN ROAD	GOUGER LANE	0.80	12	10	P	12		4
AETNA MTN ROAD	HWY 134	DEAD END	3.80	18	12	P	14		3
AETNA MTN. ROAD	STATE ROUTE 41	DEAD END	0.30	50	18	G	20		1
AIRPORT ROAD	HANCOCK ROAD	DEAD END	0.20	33	20	P	24		1
ALABAMA AVENUE	PARK STREET	SHADY GROVE ROAD	0.40	16	15	P	16		3
ALBERT PILGRIM ROAD	SHELLMOUND ROAD	DEAD END	0.60	13	10	C/M	12		4
ALDER LANE	POPLAR GROVE ROAD	DEAD END	0.30	24	10	MPB	12		3
AMANDA LEIGH ANN DR.	MELISSA DAWN DRIVE	NICKAJACK CIRCLE	0.20	50	20	P	30		1
ANDERSON RIDGE ROAD	SHELLMOUND ROAD	DEAD END	0.80	19	14	P	17		2
ANDERSON ROAD	W. FRANCIS SPRING ROAD	DEAD END	0.10	17	8	P	12		3
ANGELA DRIVE	OLD MILL ROAD	FARM ROAD	0.30	50	20	T/G	26		1
ANN WILSON ROAD	SEQUATCHIE MTN ROAD	DEAD END	0.50	50	12	MPB	15		0
ARTHUR GREEN ROAD	POCKET ROAD	DEAD END	0.10	12	10	P	12		4
BAKER LANE	MT CALVARY ROAD	ALVIN YORK HWY	1.50	36	18	P	25		1
BAPTIST HILL LOOP	GRIFFITH HWY	RECTOR ROAD	0.20	12	9	P	11		4
BARBER LANE	GRIFFITH HWY	DEAD END	0.70	15	10	C/M	12		4

Road	Beginning	Ending	Length (MI)	Right Of Way (FT)	Surface Width	Surface Type	Roadbed (FT)	Road Comm	Class
BEAKAS WAY	MACEDONIA ROAD	DEAD END	0.40	16	10	P	12	12	3
BEAN ROULSTON CEM RD	SWEETENS COVE ROAD	DEAD END	0.20	15	10	C/M	12	12	4
BEAR PEN ROAD	HWY 108	DEAD END	0.30	20	15	T/G	17	17	2
BELMONT CHURCH ROAD	KETNER MILL ROAD	MORRISON SPRINGS ROAD	0.80	20	12	P	16	16	2
BELMONT LANE	KILGORE LANE	DEAD END	0.20	18	12	P	12	12	3
BELMONT ROAD	BELMONT CHURCH ROAD	DEAD END	0.10	15	10	P	12	12	3
BENNETT LAKE ROAD	GRIFFITH HWY	DEAD END	0.40	32	20	P	28	28	1
BENNETT LAKE ROAD	MULLINS COVE ROAD	DEAD END	0.30	32	20	P	12	12	0
BENT TREE DRIVE	NCKAJACK LANDING	DEADEND	0.60	50	20	P	24	24	1
BESSIE JONES LANE	GRIFFITH HWY	BESSIE JONES ROAD	0.20	12	10	C/M	11	11	4
BESSIE JONES ROAD	GRIFFITH HWY	DEAD END	0.50	12	9	P	10	10	4
BIG FORK ROAD	HWY 27	DEAD END	3.70	40	20	P	22	22	1
BIG ROCK ROAD	RIVER CANYON ROAD	DEAD END	0.20	14	10	T/G	12	12	3
BILL ROBERTS ROAD	SHIRLEY LOOP	DEAD END	0.10	18	12	T/G	14	14	3
BILLY BENTON WAY	JACKSON POINT ROAD	DEAD END	0.40	50	20	P	24	24	1
BLACKSMITH ROAD	OLD DUNLAP ROAD	DEAD END	0.20	16	12	C/M	12	12	3
BLUEBIRD DRIVE	ROBIN DRIVE	MOCKINGBIRD LANE	0.20	16	10	P	12	12	3
BLUEBIRD LANE	TRUSSELL ROAD	DEAD END	0.90	30	20	C/M	24	24	1
BLUFF DRIVE	STATE HWY 27	DEAD END	0.40	50	20	T/G	24	24	1



Road	Beginning	Ending	Length (MI)	Right Of Way (FT)	Surface Width	Surface Type	Roadbed (FT)	Road Comm	Class
BLUFF ROAD	WORLEY LANE	DEAD END	0.30	20	12	P	16		2
BLUFF VIEW ROAD	BIG FORK ROAD	CUL-DE-SAC	0.10	50	20	P	24		1
BOB MOSLEY ROAD	VALLEY VIEW HWY	DEAD END	0.40	16	10	P	12		3
BOBBY MCCULLEY ROAD	HWY 41	DEAD END	0.10	24	15	C/M	16		3
BOLTON POINT ROAD	SO PITTSBURG MTN ROAD	DEAD END	1.40	14	12	P	12		3
BOLTON ROAD	SHELLMOUND ROAD	DEAD END	0.40	12	9	P	10		4
BOWMAN LANE	VALLEY VIEW HWY	DEAD END	0.20	15	12	T/G	12		3
BRIAR RIDGE ROAD	SMITH ROAD	DEAD END	0.20	30	12	MPB	14		3
BRIDGE CREEK ROAD	MT OLIVE ROAD	POCKET ROAD	2.30	26	12	P/CM	22		1
BRIDGE ROAD	OLD DUNLAP ROAD	DEAD END	0.10	15	10	C/M	12		4
BRINDALENE DRIVE	HWY 41	DEAD END	0.10	50	20	P	24		1
BRINDALENE LANE	BRINDALENE DRIVE	DEAD END	0.10	50	20	P	24		1
BROOKS - PARKER ROAD	SWEETENS COVE ROAD	DEAD END	0.30	21	12	P	16		2
BROWBEND DRIVE	STATE ROUTE 156	DEAD END	0.30	50	20	P	24		1
BROWN LANE	TUDER LANE	DEAD END	0.20	18	12	C/M	15		3
BROWNS CHAPEL ROAD	SEQ COUNTY LINE	DEERWOOD LANE	0.70	18	12	T/G	16		3
BROWNS HOLLOW ROAD	DYKES HOLLOW ROAD	GREEN TOWN ROAD	2.50	50	21	P	31		1
BROWNS TRACE ROAD	STATE HWY 156	CUL-DE-SAC	3.25	50	18	T/G	25		1
BRUCE ROLLINS ROAD	VALLEY VIEW HWY	VALLEY VIEW HWY	0.50	20	10	T/G	16		4

Road	Beginning	Ending	Length (MI)	Right Of Way (FT)	Surface Width	Surface Type	Roadbed (FT)	Road Comm	Class
BRYANT ROAD	HWY 27	DEAD END	0.50	20	10	P	15		3
BURGESS ROAD	OLD DUNLAP ROAD	DEAD END	0.30	18	12	T/G	14		3
BURNETT ROAD	HWY 283	CROSSROADS CITY LIMITS	1.90	28	18	P	23		2
BURNING TREE LANE	OVERLOOK DRIVE	CUL-DE-SAC	0.20	50	20	P	24		1
C.C. ROAD	KELLY CREEK/MORGANVILLE RD	SEQUATCHIE COUNTY LINE	0.50	60	20	C/M	28		1
CAMERON ROAD	HANCOCK ROAD	DEAD END	0.30	15	9	P	11		4
CAMPBELL LOOP	GRIFFITH HWY	GRIFFITH HWY	0.20	15	10	T/G	12		4
CAMPBELL ROAD	STATE HWY 108	DEAD END	0.30	15	12	P	14		3
CANDACE DRIVE	TANYA DRIVE	DEAD END	0.20	50	20	P	24		1
CANNON HOLLOW ROAD	GRUNDY COUNTY LINE	DEAD END	0.20	15	15	T/G	15		3
CANYON ROAD	SHELLMOUND ROAD	DEAD END	0.90	24	20	T/G	20		1
CAROLINE CHAPEL ROAD	FRANCIS SPRING ROAD	FRANCIS SPRING ROAD	1.00	22	16	P	20		2
CARRIAGE DRIVE	OLD DUNLAP ROAD	DEAD END	0.20	50	20	T/G	22		1
CARSON ROAD	HWY 27	CHOCTAW TRAIL	0.50	20	16	P	18		2
CASON ROAD	VICTORIA COM CNT RD	DEAD END	0.10	16	11	P	14		4
CAVE COVE ROAD	MARTIN SPRINGS ROAD	DEAD END	0.40	18	15	P	18		2
CAVE ROAD	GRIFFITH HWY	GRIFFITH HWY	0.70	23	14	P	19		2
CEDAR SPRINGS LOOP	OLD DUNLAP ROAD	OLD DUNLAP ROAD	0.70	15	12	P	12		3
CESSNA LANE	HANCOCK ROAD	DEAD END	0.10	14	12	C/M	12		3

Road	Beginning	Ending	Length (MI)	Right Of Way (FT)	Surface Width	Surface Type	Roadbed (FT)	Road Comm	Class
CHAMBERS ROAD	GRIFFITH HWY	DEAD END	0.40	14	9	P	12		3
CHERI CIRCLE	HWY 28	HWY 28	0.80	50	20	P	24		1
CHICKEN DAVE ROAD	VALLEY VIEW HWY	WEST FRANCIS SPRING ROAD	1.20	21	10	P	14		3
CHIMNEY PARK ROAD	ARTHUR GREEN ROAD	CHIMNEY PARK ROAD	0.40	50	18	T/G	20		2
CHOCTAW TRAIL	HWY 27	DEAD END	1.20	25	18	P	20		2
CINDY DRIVE	NICKAJACK CIRCLE	NICKAJACK CIRCLE	0.20	50	20	P	30		1
CLARK GRAYSON DRIVE	OLD DUNLAP ROAD	DEAD END	0.20	12	10	C/M	12		4
CLIFF TOP LANE	SO BLUFF ROAD	DEAD END	0.10	50	20	P	25		1
CLOSE LANE	AETNA MTN ROAD	DEAD END	0.10	12	9	P	10		4
CONDRA ROAD	CONDRA SWITCH ROAD	CONDRA SWITCH ROAD	0.50	12	10	P	12		4
CONDRA SWITCH ROAD	OLD DUNLAP ROAD	SEQUATCHIE COUNTY LINE	2.20	22	18	P	19		3
COOKSTON ROAD	HWY 108	DEAD END	0.10	12	9	P	10		4
COPPINGER COVE ROAD	VALLEY VIEW HWY	DEAD END	2.30	33	18	P	24		1
COPPINGER ROAD	HWY 27	DEAD END	0.10	16	12	P	14		3
COTTON MOORE ROAD	BRYANT ROAD	DEAD END	0.10	12	9	P	10		4
COVE TRAIL	CROSSROADS CITY LIMIT	DEAD END	0.50	12	9	T/G	10		4
COWAN - PICKETT ROAD	ALVIN YORK HWY	DEAD END	0.30	15	9	P	12		3
COX ROAD	STATE ROUTE 150	DEAD END	0.40	50	18	G	20		1
CRIBBS LANE	CHICKEN DAVE ROAD	DEAD END	0.10	12	10	T/G	10		4

Road	Beginning	Ending	Length (MI)	Right Of Way (FT)	Surface Width	Surface Type	Roadbed (FT)	Road Comm	Class
CUMBERLAND ROAD	HAMILTON COUNTY LINE	DEAD END	2.40	50	10	P	15	15	4
DAGNAN LANE	LADDS SWITCH ROAD	DEAD END	0.10	18	12	P	12	12	3
DALLAS ROBERTS ROAD	GRAYSON LANE	DEAD END	0.20	12	9	P	10	10	4
DANA KELLY LANE	BOB MOSLEY ROAD	DEAD END	0.10	50	18	P	18	18	0
DANCING FERN ROAD	VALLEY VIEW HWY	DEAD END	1.20	23	12	C/M	15	15	3
DAVID BROWN ROAD	DICKEY BROWN ROAD	DEAD END	0.20	50	16	T/G	20	20	1
DAVIS LANE	LADDS SWITCH ROAD	DEAD END	0.20	20	10	P	12	12	4
DAWSON SPRINGS ROAD	HWY 150	DEAD END	0.70	20	12	MPB	14	14	3
DEER TRAIL	WINDING WAY ROAD	DEAD END	0.40	50	10	T/G	12	12	4
DEERWOOD DRIVE	JACKSON POINT ROAD	DEAD END	0.40	50	20	T/G	24	24	1
DEERWOOD LANE	BROWNS CHAPEL ROAD	DEAD END	0.20	18	16	P	16	16	2
DEFUR ROAD	GRIFFITH HWY	DEAD END	0.40	12	10	P	12	12	4
DEMPSEY ROAD	ALVIN YORK HWY	DEAD END	0.80	40	18	P	24	24	2
DENNY ROAD	HASKEW ROAD	DEAD END	0.20	14	10	C/M	12	12	4
DEREK DRIVE	GLENDA DRIVE	CUL-DE-SAC	0.30	50	20	T/G	24	24	1
DICKEY BROWN ROAD	GRIFFITH HWY	BESSIE JONES ROAD	0.40	12	9	P	12	12	4
DITCH GAP ROAD	HWY 27	CUL-DE-SAC	0.60	50	20	P	24	24	1
DIXIE LANE	HWY 27	BRYANT ROAD	0.60	50	10	T/G	18	18	0
DIXON COVE ROAD	COPPINGER COVE ROAD	DEAD END	0.20	35	12	T/G	18	18	3

Road	Beginning	Ending	Length (MI)	Right Of Way (FT)	Surface Width	Surface Type	Roadbed (FT)	Road Comm	Class
DIXON LANE	HWY 41	ANDERSON RIDGE ROAD	0.20	25	16	P	16	16	2
DIXON TRAILER PARK	FRANCIS SPRING ROAD	FRANCIS SPRING ROAD	0.20	16	12	P	14	14	3
DOGWOOD FLATS ROAD	POCKET ROAD	DEAD END	0.30	30	16	MPB	18	18	2
DOGWOOD LANE	TATE LANE	DEAD END	0.30	35	18	C/M	20	20	2
DOGWOOD LN	SNAKE POND ROAD	DEAD END	0.50	30	14	T/G	18	18	3
DOGWOOD TRAIL	DOGWOOD LANE	DEAD END	0.10	50	14	P	16	16	0
DONNA LANE	WILMA DRIVE	DEAD END	0.20	50	20	T/G	32	32	1
DOODLE MORRISON ROAD	HWY 108	DEAD END	0.10	17	9	G	13	13	4
DOVER ROAD	HANCOCK ROAD	HWY 41	0.60	20	16	P	16	16	2
DREAM CIRCLE	PLEASANT GROVE ROAD	PLEASANT GROVE ROAD	0.50	50	20	T/G	22	22	1
DURHAM LANE	BAKER LANE	DEAD END	0.30	15	12	T/G	15	15	3
DYKES HOLLOW ROAD	PRYOR RIDGE ROAD	GRUNDY COUNTY LINE	2.80	19	13	P	15	15	3
EAGLE DRIVE	GRUNDY COUNTY LINE	GRUNDY COUNTY LINE	0.80	36	14	T/G	18	18	3
EAGLE LANE	PLEASANT GROVE ROAD	DEAD END	0.10	50	20	T/G	24	24	1
EAGLE POINT ROAD	EAGLE DRIVE	DEAD END	0.30	40	14	T/G	18	18	3
EAST HILLS ROAD	HANCOCK ROAD	EAST HILLS ROAD	0.90	37	20	P	29	29	1
EAST VALLEY ROAD	JASPER CITY LIMITS	GRIFFITH HWY	2.10	24	18	P	22	22	2
EASTERLY ROAD	VALLEY VIEW HWY	DEAD END	0.10	15	10	C/M	12	12	4
EDDINGTON ROAD	HWY 41	DEAD END	0.10	35	15	T/G	15	15	0

Road	Beginning	Ending	Length (MI)	Right Of Way (FT)	Surface Width	Surface Type	Roadbed (FT)	Road Comm	Class
EDMISTER ROAD	HWY 150	DEAD END	0.30	30	15	C/M	15	15	3
EDWARDS ROAD	HWY 41	DEAD END	0.10	12	10	P	11	11	4
EGYPT HOLLOW ROAD	MURPHY HOLLOW ROAD	GA STATE LINE	0.90	26	16	P	20	20	1
ELDER MTN ROAD	HAMILTON COUNTY LINE	CUMBERLAND ROAD	0.10	60	22	P	26	26	1
ELLIS COVE ROAD	ELLIS ROAD	DEAD END	0.90	25	10	MPB	12	12	3
ELLIS PARK LANE	HWY 41	DEAD END	0.20	30	20	P	24	24	1
ELLIS ROAD	FISH TRAP ROAD	BATTLE CREEK ROAD	3.10	14	10	P	12	12	3
ELNA AVENUE	FIDDLER'S DRIVE	DEAD END	0.10	50	20	T/G	24	24	1
EMERSON ESTATES LANE	EAST VALLEY ROAD	DEAD END	0.30	20	12	P	16	16	3
ENGLISH COVE ROAD	MT OLIVE ROAD	DEAD END	0.70	12	9	P	10	10	4
EVENING SHADOWS LANE	SHELTON LANE	DEAD END	0.30	50	20	T/G	24	24	1
FARM ROAD	SHIRLEY LOOP	DEAD END	0.40	12	9	P	12	12	4
FERGUSON ROAD	HWY 150	DEAD END	0.10	12	9	G	12	12	4
FIDDLER'S DRIVE	ANGELA DRIVE	POWELL LANE	0.30	50	20	T/G	24	24	1
FIERY GIZZARD ROAD	BATTLE CREEK ROAD	DEAD END	4.30	24	14	P	18	18	3
FISH BRANCH ROAD	HWY 108	DEAD END	0.60	26	12	C/M	18	18	2
FISH TRAP ROAD	BATTLE CREEK ROAD	SWEETENS COVE ROAD	2.40	23	14	P	18	18	2
FOX TRAIL	SHELLMOUND ROAD	DEAD END	0.50	50	20	P	24	24	1
FRANCIS SPRING LANE	FRANCIS SPRING ROAD	HWY 28	1.20	24	16	T/G	16	16	2

Road	Beginning	Ending	Length (MI)	Right Of Way (FT)	Surface Width	Surface Type	Roadbed (FT)	Road Comm	Class
FRANCIS SPRING ROAD	KETNER MILL ROAD	JASPER CITY LIMITS	4.90	24	18	P	20		2
FRANCIS SPRING TRAIL	FRANCIS SPRING LANE	DEAD END	0.40	50	14	P	16		0
FRANK BOLTON ROAD	S. PITTSBURG MTN ROAD	DEAD END	0.30	24	12	MPB	18		3
FULLER ROAD	GRIFFITH HWY	DEAD END	0.20	18	12	P	12		3
GAINES COVE ROAD	BATTLE CREEK ROAD	DEAD END	0.60	24	10	MPB	16		4
GAME RESERVE ROAD	CHOCTAW TRAIL	PRENTICE COOPER FORREST BDY.	0.20	20	16	P	18		2
GAYDNA DRIVE	LORT LANE	GLENDA DRIVE	0.10	50	20	P	24		1
GEORGE LAYNE ROAD	POCKET ROAD	DEAD END	0.20	12	10	MPB	12		4
GERLAUGH ROAD	PANORAMA TRAIL	DEAD END	0.10	50	20	P	24		1
GILLIAMS COVE ROAD	SWEETENS COVE ROAD	DEAD END	0.90	18	8	T/G	12		3
GIZZARD CREEK ROAD	HWY 150	DEAD END	2.60	50	20	P	24		1
GLENDA DRIVE	LARK TRAIL	GAYDNA DRIVE	0.20	50	20	P	24		1
GLENVIEW ESTATES RD	EAST VALLEY ROAD	JOYCE LANE	0.30	25	20	P	22		1
GOFF-PAYNE ROAD	BATTLE CREEK ROAD	DEAD END	0.30	16	10	P	12		4
GOFORTH LANE	FRANCIS SPRING ROAD	DEAD END	0.10	35	10	P	20		1
GOLD ROAD	EAST VALLEY ROAD	JOYCE LANE	0.30	50	20	P	30		1
GOOSE POND ROAD	GRAYSON ROAD	MT CALVARY ROAD	1.60	29	12	P	19		2
GOUGER LANE	HWY 134	DEAD END	0.40	12	9	P	10		4
GOURDNECK COVE ROAD	SWEETENS COVE ROAD	DEAD END	0.80	19	11	P	14		3

Road	Beginning	Ending	Length (MI)	Right Of Way (FT)	Surface Width	Surface Type	Roadbed (FT)	Road Comm	Class
GRAYS CREEK ROAD	POCKET ROAD	DEAD END	0.80	50	18	P	20		1
GRAYSON CEMETERY RD	ALVIN YORK HWY	GRAYSON ROAD	0.30	15	9	T/G	12		4
GRAYSON LANE	GRAYSON ROAD	DEAD END	0.30	15	12	P	12		3
GRAYSON ROAD	ALVIN YORK HWY	MT CALVARY ROAD	1.50	30	16	P	20		1
GREEN MEADOW DRIVE	WOODLAND ROAD	DEAD END	0.20	50	20	T/G	24		1
GREEN RD	HIGGINS ROAD	DEAD END	0.20	12	10	P	12		4
GREEN ROAD	BROWNS HOLLOW ROAD	DEAD END	0.20	14	9	T/G	12		3
GREEN TOWN ROAD	BROWNS HOLLOW ROAD	DEAD END	1.10	24	18	P	20		1
GRIFFITH CHURCH ROAD	HWY 108	DEAD END	0.10	14	10	P	12		3
GRIFFITH LANE	HWY 108	DEAD END	0.20	27	15	C/M	21		3
GRIFFITH ROAD	OLD DUNLAP ROAD	GRIFFITH ROAD	0.40	12	9	C/M	12		4
HACKWORTH ROAD	OLD DUNLAP ROAD	HWY 28	0.50	19	12	P	14		3
HALES BAR ROAD	HWY 41	HWY 41	1.90	18	16	P	16		2
HALL ROAD	SHELTON LANE	GRIFFITH HWY	1.40	22	16	P	20		2
HALLIE LANE	BRUCE ROLLINS ROAD	CUL-DE-SAC	0.10	50	20	T/G	22		1
HANCOCK ROAD	HWY 41	EAST VALLEY ROAD	1.70	35	20	P	24		1
HANDLE STREET	VALLEY VIEW HWY	DEAD END	0.30	20	16	P	16		2
HANK FOSTER LANE	HWY 150	DEAD END	0.40	18	15	T/G	15		3
HARGISS COVE ROAD	MARTIN SPRINGS ROAD	DEAD END	0.60	23	14	C/M	16		3



Road	Beginning	Ending	Length (MI)	Right Of Way (FT)	Surface Width	Surface Type	Roadbed (FT)	Road Comm	Class
HARRIS ROAD	JASPER CITY LIMITS	MCCANN ROAD	0.20	50	16	T/G	16		0
HASKEW ROAD	FIERY GIZZARD ROAD	DEAD END	0.40	14	10	P	12		3
HASS ROAD	SHELLMOUND ROAD	DEAD END	0.70	18	12	C/M	14		3
HAYNES ROAD	JUMPOFF MTN RD	DEAD END	0.70	15	12	C/M	15		3
HEALING BLUFF ROAD	HEALING SPRINGS ROAD	DEAD END	0.20	50	20	P	25		1
HEALING SPR 1200 BLK	HEALING SPRINGS ROAD	HEALING SPR 1200 BLK	0.50	50	20	P	25		1
HEALING SPRINGS RD	CUMBERLAND ROAD	CUMBERLAND ROAD	0.90	50	20	P	25		1
HEAVY DUTY LANE	MT CALVARY ROAD	DEAD END	0.20	15	12	P	12		3
HEN HOUSE ROAD	KILGORE TOWN RD	DEAD END	0.20	12	9	P	12		4
HENLEY COVE ROAD	LADDS COVE ROAD	HENLEY COVE ROAD	0.60	14	10	C/M	12		4
HENRY CIRCLE	FRANCIS SPRING ROAD	DEAD END	0.10	40	10	T/G	12		0
HERBERT DRIVE	HERBERT LANE	DEAD END	0.20	30	15	C/M	15		3
HERBERT LANE	GOLD ROAD	HERBERT DRIVE	0.30	14	9	P	11		4
HERKEY ROAD	BRUCE ROLLINS ROAD	DEAD END	0.10	50	20	T/G	22		1
HEWGLEYS ROAD	SO PITTSBURG MTN RD	DEAD END	0.40	24	12	P	18		2
HICKORY RIDGE ROAD	GOLD ROAD	DEAD END	0.20	50	16	C/M	20		2
HICKS HOLLOW ROAD	HALES BAR ROAD	DEAD END	0.40	15	10	P	12		4
HICKS LANE	MT OLIVE ROAD	MT OLIVE ROAD	0.10	14	12	T/G	14		3
HIGGINS ROAD	HWY 108	DEAD END	0.20	14	10	P	12		3

Road	Beginning	Ending	Length (MI)	Right Of Way (FT)	Surface Width	Surface Type	Roadbed (FT)	Road Comm	Class
HILLSIDE ROAD	VALLEY VIEW HWY	DEAD END	0.30	50	10	P	14		4
HOBBS ROAD	VALLEY VIEW HWY	VALLEY VIEW HWY	0.10	12	10	C/M	10		4
HOLDER LANE	HWY 41	HOLDER LANE	0.40	50	20	P	26		1
HOLLAND ROAD	WEST FRANCIS SPRING ROAD	DEAD END	0.10	24	8	P	12		4
HOLLOW ROAD	FRANCIS SPRING ROAD	DEAD END	0.40	35	12	T/G	16		3
HONEY HOLLOW TRAIL	PLEASANT GROVE RD.	MTN. VIEW RD.	0.30	50	18	T/G	20		1
HORACE SMITH ROAD	WEST FRANCIS SPRING ROAD	DEAD END	0.30	12	9	MPB	10		4
HORSESHOE LANE	JACKSON POINT ROAD	DEAD END	0.40	50	20	T/G	24		1
HOYT ROBERTS ROAD	GRIFFITH HWY	DEAD END	0.30	12	9	C/M	10		4
HUFF LANE	HICKS HOLLOW ROAD	DEAD END	0.10	15	12	C/M	12		3
HUMMINGBIRD LANE	TRUSSELL ROAD	DEAD END	0.50	50	12	C/M	12		3
INCLINE ROAD	WHITWELL CITY LIMITS	DEAD END	1.00	30	14	P	20		3
INEZ ROAD	SCRATCH ANKLE ROAD	DEAD END	0.20	50	18	T/G	20		1
INMAN ROAD	GRIFFITH HWY	CAROLINE CHAPEL ROAD	0.80	24	18	P	20		2
IVEY ROAD	SCRATCH ANKLE ROAD	DEAD END	0.40	15	12	T/G	12		3
JACK ROSS ROAD	KETNER MILL ROAD	FRANCIS SPRING ROAD	1.00	25	10	MPB	15		4
JACK WILSON ROAD	PATTON SCHOOL ROAD	DEAD END	0.40	12	10	P	12		4
JACKSON POINT ROAD	STAGECOACH ROAD	DEAD END	4.90	50	20	T/G	24		1
JAMES RUSSELL ROAD	CHICKEN DAVE ROAD	DEAD END	0.20	20	10	T/G	14		4

Road	Beginning	Ending	Length (MI)	Right Of Way (FT)	Surface Width	Surface Type	Roadbed (FT)	Road Comm	Class
JANE'S DRIVE	FIDDLER'S DRIVE	DEAD END	0.10	50	20	T/G	24		1
JEFF ROAD	CLARK GRAYSON DRIVE	DEAD END	0.30	50	12	T/G	14		3
JERNIGAN ROAD	TRUSSELL ROAD	BLUEBIRD LANE	0.30	25	12	C/M	18		3
JERRY DEMPSEY ROAD	VALLEY VIEW HWY	DEAD END	0.10	18	10	T/G	14		4
JESSICA DANIELLE LN	CINDY DRIVE	DEAD END	0.10	50	20	P	30		1
JIM LONG STREET	MONTEAGLE CITY LIMITS	DEAD END	0.20	12	10	P	12		4
JOHN COFFELT ROAD	HWY 108	DEAD END	0.10	12	10	T/G	12		4
JOHN DEMPSEY ROAD	ALVIN YORK HWY	DEAD END	0.40	15	10	P	12		4
JOHN HARRIS ROAD	FRANCIS SPRING ROAD	DEAD END	0.20	12	9	T/G	10		4
JOHN MILLER ROAD	FRANCIS SPRING ROAD	WEST FRANCIS SPRING ROAD	0.50	24	18	P	24		2
JOHNNY STEIFEL DRIVE	GIZZARD CREEK ROAD	GIZZARD CREEK ROAD	0.70	50	20	T/G	24		1
JONES CROSSING ROAD	VALLEY VIEW HWY	HWY 28	1.50	27	15	P	19		2
JONES POINT ROAD	VALLEY VIEW HWY	DEAD END	0.10	15	12	T/G	12		3
JOSEPH DANIEL LANE	MELISSA DAWN DRIVE	DEAD END	0.10	50	20	P	24		1
JOYCE LANE	GOLD ROAD	GLENVIEW ESTATES ROAD	0.30	50	20	P	24		1
JUMPOFF MTN ROAD	SO PITTSBURG MTN RD	DEAD END	1.70	30	12	MPB	18		3
KATHRYN WAY	HWY 41	DEAD END	0.10	15	12	T/G	12		3
KEEF ROAD	LADDS SWITCH ROAD	OLD SHELLMOUND ROAD	0.10	12	9	P	10		4
KELLY COVE ROAD	BATTLE CREEK ROAD	DEAD END	1.00	20	12	P	15		3

Road	Beginning	Ending	Length (MI)	Right Of Way (FT)	Surface Width	Surface Type	Roadbed (FT)	Road Comm	Class
KELLY CREEK ROAD	SEQUATCHIE COUNTY LINE	DEAD END	0.70	50	20	T/G	28		1
KETCHERSID LANE	WHITWELL CITY LIMITS	DEAD END	0.10	18	12	P	12		3
KETNER COVE ROAD	ALVIN YORK HWY	CROSSROADS CITY LIMITS	0.30	18	12	P	15		3
KETNER MILL LANE	GRIFFITH HWY	KETNER MILL ROAD	1.40	36	21	P	26		1
KETNER MILL ROAD	GRIFFITH HWY	VALLEY VIEW HWY	3.50	28	16	P	21		1
KILGORE - GOFORTH RD	POCKET ROAD	DEAD END	0.30	14	10	MPB	14		4
KILGORE LANE	BELMONT CHURCH ROAD	RUTH ROAD	0.40	20	18	P	18		2
KILGORE ROAD	VALLEY VIEW HWY	DEAD END	0.40	23	13	P	18		2
KILGORE TOWN ROAD	HWY 150	DEAD END	0.30	14	10	P	12		3
KILGORE TRAIL	MT OLIVE ROAD	DEAD END	0.20	14	12	T/G	12		3
KIMBALL COVE ROAD	KIMBALL CITY LIMITS	DEAD END	0.40	22	20	C/M	22		2
KING COVE ROAD	ALA STATE LINE	DEAD END	0.60	14	10	T/G	12		4
KIRBY TATE ROAD	LADDS COVE ROAD	DEAD END	0.30	16	14	T/G	15		3
KIRK LANE	HEWGLEYS ROAD	DEAD END	0.20	20	15	P	15		3
KNOLL WOODS ROAD	PLEASANT GROVE ROAD	KNOLL WOODS ROAD	0.50	50	20	P	30		1
LADD LANE	HWY 27	DEAD END	0.10	20	15	P	15		3
LADDS COVE ROAD	BATTLE CREEK ROAD	DEAD END	4.30	50	20	P	25		1
LADDS SWITCH ROAD	HWY 156	DEAD END	0.70	14	10	P	12		4
LAKE ROAD	HALES BAR ROAD	RIVER ROAD	0.10	15	12	C/M	12		3

Road	Beginning	Ending	Length (MI)	Right Of Way (FT)	Surface Width	Surface Type	Roadbed (FT)	Road Comm	Class
LAKESHORE DRIVE	HWY 41	DEAD END	0.90	15	10	P	12		3
LARK TRAIL	JOYCE LANE	GLENDIA DRIVE	0.10	18	16	P	16		2
LASATER CEMETERY RD	VALLEY VIEW HWY	DEAD END	0.30	12	9	P	12		4
LASSITER ROAD	VALLEY VIEW HWY	HWY 28	1.20	15	10	P	12		3
LAUREL BRANCH TRAIL	SO PITTSBURG MTN ROAD	FRANKLIN COUNTY LINE	0.10	30	16	T/G	19		2
LAWRENCE ROSS ROAD	KETNER MILL ROAD	DEAD END	0.40	21	10	T/G	14		4
LAWSON ROAD	ALBERT PILGRIM ROAD	DEAD END	0.10	12	9	T/G	10		4
LEAMAN ROAD	SCRATCH ANKLE ROAD	DEAD END	0.10	15	10	T/G	10		4
LEE MORRISON ROAD	HWY 108	HWY 108	0.50	22	14	P	16		2
LICK POINT ROAD	HWY 150	DEAD END	0.60	21	11	MPB	15		4
LILY LANE	EAST VALLEY ROAD	DEAD END	0.10	12	10	P	12		4
LINDSEY AVENUE	JIM LONG STREET	DEAD END	0.10	15	12	P	12		3
LINDSEY DRIVE	ANGELA DRIVE	CUL-DE-SAC	0.10	50	20	T/G	26		1
LITTLE FIERY ROAD	SUNSHINE ROAD	DEAD END	0.30	50	18	T/G	20		1
LOCK AND DAM ROAD	GRIFFITH HWY	DEAD END	1.50	34	24	P	29		1
LODGE LANE	SWEETENS COVE ROAD	DEAD END	0.40	18	9	P	14		3
LODGE POINT ROAD	PATTON SCHOOL ROAD	DEAD END	0.20	50	20	T/G	22		1
LOONEY'S CREEK DRIVE	ALVIN YORK HWY	CUL-DE-SAC	0.20	50	20	P	24		1
LORI LANE	JOYCE LANE	LARK TRAIL	0.20	20	16	P	18		2

Road	Beginning	Ending	Length (MI)	Right Of Way (FT)	Surface Width	Surface Type	Roadbed (FT)	Road Comm	Class
LOWER FIRETOWER ROAD	SEQ MTN ROAD	DEAD END	1.70	40	20	T/G	24		1
LUCAS LANE	PEYTON DRIVE	CUL-DE-SAC	0.10	50	20	P	24		1
LYNN LANE	CHERT CIRCLE	DEAD END	0.20	50	16	MPB	18		2
MACEDONIA ROAD	HWY 156	GA STATE LINE	0.70	23	18	P	21		2
MAGNOLIA LANE	MCCOPELIN CIRCLE	DEAD END	0.10	35	18	T/G	24		2
MANIS ROAD	WILSON ROAD	DEAD END	0.10	12	9	C/M	10		4
MARION CO TRAILER PK	HANCOCK ROAD	MARION CO TRAILER PK	0.50	31	20	P	24		1
MARTIN GAINS ROAD	BATTLE CREEK ROAD	KELLY COVE ROAD	0.40	16	12	P	14		3
MARTIN SPRINGS ROAD	BATTLE CREEK ROAD	DEAD END	2.60	50	24	P	32		1
MASHBURN LANE	AETNA MTN ROAD	DEAD END	0.10	20	15	P	15		3
MAY LANE	WATER FALL ROAD	SHADY GROVE ROAD	0.10	28	14	P	12		3
MAY ROAD	SHADY GROVE ROAD	VALLEY VIEW HWY	0.20	20	16	P	18		2
MCBEE ROAD	RAVENS DEN ROAD	DEAD END	0.10	50	20	T/G	25		1
MCBRIEN LANE	HWY 41	DEAD END	1.00	12	9	T/G	10		4
MCCANN ROAD	FRANCIS SPRING ROAD	DEAD END	0.40	12	10	C/M	10		4
MCCLENDON ROAD	GRIFFITH HWY	DEAD END	0.20	12	8	P	10		4
MCCOPELIN CIRCLE	WEST FRANCIS SPRING ROAD	WEST FRANCIS SPRING ROAD	0.60	34	18	P	20		2
MCCULLLEY ROAD	LADDS SWITCH ROAD	DEAD END	0.50	16	12	P	14		3
MCDONOUGH ROAD	TEAGUE CEMETERY ROAD	DEAD END	0.20	50	18	P	18		0

Road	Beginning	Ending	Length (MI)	Right Of Way (FT)	Surface Width	Surface Type	Roadbed (FT)	Road Comm	Class
MC FALLS ROAD	HICKS HOLLOW ROAD	DEAD END	0.10	15	12	C/M	12		3
MCGOWAN ROAD	RED HILL CEMETERY RD	DEAD END	0.20	12	10	T/G	12		4
MCNABB ROAD	HWY 41	DEAD END	0.10	15	10	P	12		3
MEADOW BROOK LANE	GREEN MEADOW DRIVE	DEAD END	0.10	50	20	T/G	24		1
MEEKS ROAD	HWY 150	DEAD END	0.50	30	10	P	14		3
MEL DIXON LANE	FRANCIS SPRING ROAD	VALLEY VIEW HWY	1.10	22	18	P	20		2
MELISSA DAWN DRIVE	CINDY DRIVE	NICKAJACK CIRCLE	0.20	50	20	P	32		1
MITCHELL ROAD	MT CALVARY ROAD	MT CALVARY ROAD	0.40	12	9	P	10		4
MOCKINGBIRD LANE	ROBIN DRIVE	DEAD END	0.10	25	10	P	18		2
MORRISON SPRINGS RD	VALLEY VIEW HWY	KETNER MILL ROAD	1.80	32	20	P	26		1
MOSLEY ROAD	SHELTON LANE	DEAD END	0.20	12	10	T/G	10		4
MOSSY OAK DRIVE	STATE ROUTE 150	DEAD END	0.70	50	20	T/G	24		1
MOUNTAIN COVE ROAD	GRIFFITH HWY	DEAD END	0.60	34	20	P	25		1
MOUNTAIN CREST DRIVE	KETNER MILL ROAD	DEAD END	0.20	50	20	P	21		1
MOUNTAIN VIEW CIRCLE	SHELLMOUND ROAD	MOUNTAIN VIEW CIRCLE	0.40	24	18	T/G	20		2
MOUNTAIN VIEW ROAD	INLINE ROAD	DEAD END	0.40	50	20	T/G	24		1
MT CALVARY ROAD	HWY 28	ALVIN YORK HWY	2.50	27	18	P	20		2
MT OLIVE ROAD	HWY 108	RANKIN ROAD	5.90	40	20	P	24		1
MTN VIEW ROAD	PLEASANT GROVE ROAD	DEAD END	0.40	14	10	C/M	12		4

Road	Beginning	Ending	Length (MI)	Right Of Way (FT)	Surface Width	Surface Type	Roadbed (FT)	Road Comm	Class
MTN WATER TANK ROAD	ORME MTN ROAD	DEAD END	0.10	50	20	T/G	22		1
MULLINS COVE ROAD	GRIFFITH HWY	RIVER CANYON ROAD	17.60	30	22	P	25		1
MURPHY HOLLOW LANE	HWY 134	HWY 134	0.30	30	18	T/G	18		2
MURPHY HOLLOW ROAD	MURPHY HOLLOW LANE	GA STATE LINE	0.40	12	10	P	12		4
MYERS AVENUE	STATE RT 156	DEAD END	0.20	50	20	P	24		1
NANCY WYNN DRIVE	JACKSON POINT ROAD	DEAD END	0.40	50	20	T/G	24		1
NELSON ROAD	HIGHWAY 150	DEADEND	0.70	50	16	T/G	18		0
NICHOLS ROAD	HWY 41	DEAD END	0.30	11	9	P	10		4
NICKAJACK CIRCLE	SHELLMOUND ROAD	SHELLMOUND ROAD	1.10	50	20	P	30		1
NICKAJACK LANDING	HIGHWAY 156	DEAD END	0.70	50	20	P	22		1
NICKAJACK TRACE	SCENIC DRIVE	DEAD END	0.30	50	20	P	24		1
NORTH END CIRCLE	BELMONT CHURCH ROAD	BELMONT CHURCH ROAD	0.30	18	12	C/M	15		3
NUNLEY ROAD	HWY 108	DEAD END	0.20	20	10	T/G	16		4
OLD BAPTIST HILL RD	GRIFFITH HWY	POE ROAD	0.30	18	16	C/M	16		2
OLD DUNLAP ROAD	WHITWELL CITY LIMITS	SEQ COUNTY LINE	5.30	24	18	P	18		2
OLD HARRIS TURNPIKE	BROWNS TRACE ROAD	CUL-DE-SAC	1.79	50	18	T/G	25		1
OLD KILGORE LANE	HWY 108	DEAD END	0.20	19	10	P	14		3
OLD MILL ROAD	HWY 28	DEAD END	0.50	23	15	P	18		2
OLD MULLINS COVE RD	GRIFFITH HWY	DEAD END	0.10	14	10	P	12		3



Road	Beginning	Ending	Length (MI)	Right Of Way (FT)	Surface Width	Surface Type	Roadbed (FT)	Road Comm	Class
OLD PRIGMORE LANE	MORRISON SPRINGS ROAD	DEAD END	0.10	50	18	P	20		1
OLD SEWANEER ROAD	STAGECOACH ROAD	DEAD END	1.50	50	20	T/G	24		1
OLD SHELLMOUND ROAD	LADDS SWITCH ROAD	HWY 156	0.20	24	16	P	18		2
OLD WHITESIDE ROAD	HWY 134	HWY 134	0.60	17	12	P	13		3
OLIVER DRIVE	TRUSSELL ROAD	DEAD END	0.60	24	15	C/M	24		3
ORANGE DRIVE	PRYOR RIDGE ROAD	DEAD END	0.10	15	12	P	12		3
ORME MTN ROAD	ORME CITY LIMITS	SO PITTSBURG MTN RD	3.10	30	18	P	24		1
OVERLOOK TRAIL	PICKETT DRIVE	DEAD END	0.30	50	12	MPB	12		3
OWEN STREET	VALLEY VIEW HWY	DEAD END	0.40	36	18	P	26		2
OWL HOLLOW ROAD	BRIDGE CREEK ROAD	DEAD END	0.40	14	10	P	12		3
PANORAMA TRAIL	ALVIN YORK HWY	DEAD END	0.70	50	20	P	25		1
PARK STREET	VALLEY VIEW HWY	PARK STREET	0.30	20	14	P	16		3
PARKER DRIVE	HWY 41	DOVER ROAD	0.20	18	12	P	12		3
PARKERS LANE	HWY 134	DEAD END	0.20	18	12	P	12		3
PARTIN FARM ROAD	GRUNDY COUNTY LINE	DEAD END	0.80	60	12	T/G	14		3
PATTON SCHOOL ROAD	SO PITTSBURG MTN ROAD	DEAD END	1.50	24	18	P	20		2
PAYNE CAVE DRIVE	BROWNS TRACE ROAD	CUL-DE-SAC	0.67	50	18	T/G	25		1
PERKINS LANE	OLD DUNLAP ROAD	DEAD END	0.30	17	10	P	14		4
PETE GRAHAM ROAD	HWY 41	DEAD END	0.30	50	20	P	24		1

Road	Beginning	Ending	Length (MI)	Right Of Way (FT)	Surface Width	Surface Type	Roadbed (FT)	Road Comm	Class
PEYTON DRIVE	SWEETENS COVE ROAD	CUL-DE-SAC	0.20	50	20	P	24		1
PICKETT CEMET ROAD	ALVIN YORK HWY	DEAD END	0.30	12	9	C/M	12		4
PICKETT DRIVE	CROSSROADS CITY LIMITS	COVE TRAIL	0.10	40	16	P	18		2
PIERCY ROAD	SHELLMOUND ROAD	DEAD END	0.50	30	16	P	20		1
PIERSON LANE	KETNER COVE ROAD	DEAD END	0.20	35	15	C/M	16		3
PINE HILL CEMET ROAD	POCKET ROAD	DEAD END	0.90	12	9	C/M	12		4
PINE STREET	SHERWOOD STREET	WATER FALL ROAD	0.20	15	15	P	15		3
PITTMAN LANE	STATE ROUTE 28	DEAD END	0.20	50	12	P	14		0
PITTMAN ROAD	FRANCIS SPRING ROAD	W. FRANCIS SPRING ROAD	1.00	14	10	MPB	12		4
PLEASANT GRO. CEM.	PLEASANT GROVE ROAD	PLEASANT GROVE ROAD	0.30	12	10	T/G	12		4
PLEASANT GROVE ROAD	HWY 41	EAST VALLEY ROAD	1.30	26	20	P	22		1
PLEASANT LANE	PLEASANT GROVE ROAD	DEAD END	0.20	15	12	P	12		3
PLEASANT VIEW CIRCLE	PLEASANT GROVE ROAD	PLEASANT VIEW CIRCLE	0.40	25	16	P	20		2
POCKET ROAD	HWY 108	DEAD END	7.50	35	20	MPB	28		1
POE ROAD	GRIFFITH HWY	DEAD END	0.10	12	9	T/G	10		4
POLO FIELD ROAD	CUMBERLAND ROAD	DEAD END	0.10	50	20	P	25		1
POPLAR GROVE ROAD	WEST FRANCIS SPRING ROAD	FRANCIS SPRING ROAD	1.00	22	18	P	20		2
POPULAR SPRINGS ROAD	BROWNS HOLLOW ROAD	DEAD END	1.20	15	10	T/G	12		3
PORTER MCCURRY ROAD	HWY 28	DEAD END	0.10	15	12	P	12		3

Road	Beginning	Ending	Length (MI)	Right Of Way (FT)	Surface Width	Surface Type	Roadbed (FT)	Road Comm	Class
POWELL ROAD	ALVIN YORK HWY	DEAD END	0.90	12	9	P	12		4
PRESNELL CEMET ROAD	POCKET ROAD	PRESNELL CEMET ROA	0.70	12	9	MPB	12		4
PRESNELL HILL ROAD	POCKET ROAD	DEAD END	0.10	20	12	MPB	15		3
PRYOR COVE ROAD	JASPER CITY LIMITS	PRYOR COVE RD	0.06	12	9	T/G	12		4
PRYOR COVE ROAD	PRYOR COVE ROAD	DEAD END	0.26	12	9	T/G	12		4
PRYOR COVE ROAD	PRYOR COVE RD	PRYOR COVE RD	0.18	35	18	P	22		1
PRYOR RIDGE ROAD	HWY 150	DEAD END	2.00	21	14	P	16		2
PULLTIGHT ROAD	OLD WHITESIDE ROAD	DEAD END	0.10	14	9	T/G	11		4
RANKIN ROAD	MT OLIVE ROAD	DEAD END	0.50	23	10	C/M	15		3
RANKINS COVE CH.RD.	HWY 41	DEAD END	0.20	40	16	T/G	20		2
RANKINS COVE ROAD	GRIFFITH HWY	HWY 41	0.20	12	10	C/M	12		4
RAULSTON ROAD	STOKER ROAD	DEAD END	0.30	50	16	T/G	16		2
RAVENS DEN ROAD	JUMPOFF MTN. RD	DEAD END	2.90	50	20	T/G	25		1
RAYMOND NUNLEY ROAD	OLD DUNLAP ROAD	DEAD END	0.10	14	10	C/M	12		4
REBA DRIVE	POWELL LANE	DEAD END	0.10	50	20	T/G	24		1
REBECCA DRIVE	ROBBIE DRIVE	DEAD END	0.30	50	20	P	24		1
RECTOR ROAD	HANCOCK ROAD	GRIFFITH HWY	0.70	18	12	P	14		3
RED BUD TRAIL	KIMBALL CITY LIMITS	DEAD END	0.20	21	10	P	13		4
RED HILL CEMET ROAD	OLD DUNLAP ROAD	DEAD END	0.40	16	12	C/M	14		3
REELS COVE ROAD	OLD DUNLAP ROAD	OLD DUNLAP ROAD	1.20	25	14	P	19		3

Road	Beginning	Ending	Length (MI)	Right Of Way (FT)	Surface Width	Surface Type	Roadbed (FT)	Road Comm	Class
RENA DRIVE	ANGELA DRIVE	DEAD END	0.10	50	20	T/G	24		1
RIDGE ROAD	WEST FRANCIS SPRING ROAD	DEAD END	0.20	12	8	P	10		4
RIVER BEND DRIVE	CUMBERLAND ROAD	RIVER BEND DRIVE	0.30	50	20	P	25		1
RIVER CANYON ROAD	HWY 27	MULLINS COVE ROAD	4.00	18	15	P	16		2
RIVER ROAD	LAKE ROAD	DEAD END	0.10	15	12	T/G	12		3
ROBBIE DRIVE	TANYA DRIVE	REBECCA DRIVE	0.10	50	20	P	24		1
ROBIN DRIVE	HWY 27	CHOCTAW TRAIL	0.30	24	15	P	20		3
ROLLINS LOOP	POCKET ROAD	POCKET ROAD	0.40	12	9	MPB	12		4
RUTH ROAD	MORRISON SPRINGS ROAD	DEAD END	0.50	24	16	P	18		2
SADDLE TREE LANE	JACKSON POINT ROAD	DEAD END	0.40	50	20	T/G	24		1
SAM LONG ROAD	RECTOR ROAD	DEAD END	0.30	14	10	C/M	12		4
SARDIS CHURCH ROAD	VALLEY VIEW HWY	VALLEY VIEW HWY	0.20	20	12	P	18		2
SAWMILL BRANCH LANE	COPPINGER COVE ROAD	DEAD END	0.30	15	12	P	12		3
SAWMILL CREEK TRAIL	SEQUATCHIE MTN ROAD	DEAD END	0.40	20	9	MPB	10		4
SCENIC DRIVE	NICKAJACK LANDING	CUL-DE-SAC	1.00	50	20	P	24		1
SCHOOL HOUSE ROAD	HWY 108	DEAD END	0.30	12	9	P	10		4
SCISSOM TOWN ROAD	POCKET ROAD	DEAD END	0.40	23	12	C/M	14		3
SCRATCH ANKLE ROAD	HWY 134	DEAD END	0.40	25	16	T/G	16		2
SEAGROVES ROAD	BROWNS HOLLOW ROAD	DEAD END	0.50	27	10	T/G	16		4

Road	Beginning	Ending	Length (MI)	Right Of Way (FT)	Surface Width	Surface Type	Roadbed (FT)	Road Comm	Class
SEQUATCHIE LANE	HANDLE STREET	DEAD END	0.60	20	11	P	15		3
SEQUATCHIE MTN ROAD	VALLEY VIEW HWY	HWY 150	5.30	38	18	P	22		2
SHADY GROVE ROAD	VALLEY VIEW HWY	VALLEY VIEW HWY	0.60	20	18	P	18		2
SHELLEY-JOHNSON ROAD	BIG FORK ROAD	CUL-DE-SAC	0.10	50	20	T/G	24		1
SHELLMOUND ROAD	HWY 41	T.V.A. ROAD	5.20	32	22	P	26		1
SHELTON LANE	FRANCIS SPRING ROAD	GRIFFITH HWY	1.00	21	20	P	20		2
SHERRIE DRIVE	ANGELA DRIVE	DEAD END	0.10	50	20	T/G	24		1
SHERRY ROAD	GOLD ROAD	DEAD END	0.60	40	10	MPB	18		4
SHERWOOD STREET	SEQUATCHIE LANE	OWEN STREET	0.40	23	14	T/G	19		3
SHIRLEY LOOP	HWY 28	OLD MILL ROAD	1.00	20	14	P	17		3
SHORT STREET	SEQ MTN ROAD	OWEN STREET	0.10	15	12	T/G	12		3
SKILLET GAP	HAMILTON COUNTY LINE	DEAD END	0.60	50	20	T/G	24		1
SLATTON LANE	OLD DUNLAP ROAD	DEAD END	0.40	14	10	P	12		4
SLEEPY HOLLOW ROAD	CUMBERLAND ROAD	DEAD END	0.20	50	20	P	25		1
SMITH LANE	ALBERT PILGRIM ROAD	DEAD END	0.20	20	12	T/G	18		3
SMITH ROAD	POPLAR GROVE ROAD	BRIAR RIDGE ROAD	0.30	26	12	MPB	14		3
SNAKE POND ROAD	SO PITTSBURG MTN ROAD	DEAD END	1.50	30	16	P	20		2
SNOW HILL ROAD	HWY 283	WHITWELL CITY LIMITS	0.30	25	13	P	19		3
SOURWOOD LANE	DEERWOOD LANE	DEAD END	0.10	50	20	P	24		1

Road	Beginning	Ending	Length (MI)	Right Of Way (FT)	Surface Width	Surface Type	Roadbed (FT)	Road Comm	Class
SOUTH BLUFF ROAD	CUMBERLAND ROAD	DEAD END	0.40	50	20	P	25	1	1
SPANGLER ROAD	HWY 41	DEAD END	0.10	15	12	C/M	15	15	3
STAGECOACH ROAD	SNAKE POND ROAD	BATTLE CREEK ROAD	6.30	50	20	P	24	24	1
STANCIL GREEN ROAD	POCKET ROAD	DEAD END	0.20	12	9	C/M	12	12	4
STEPHENSON ROAD	MT OLIVE ROAD	DEAD END	0.20	12	10	T/G	10	10	4
STOKER RIDGE ROAD	STOKER ROAD	DEAD END	0.30	50	20	P	22	22	1
STOKER ROAD	GRIFFITH HWY	DEAD END	0.30	35	18	P	20	20	1
SUBSTATION ROAD	HWY 156	DEAD END	0.20	18	12	T/G	15	15	3
SUCCESS DRIVE	DREAM CIRCLE	DEAD END	0.10	50	20	T/G	22	22	1
SUMMERS ROAD	VALLEY VIEW HWY	DEAD END	0.20	18	16	P	16	16	2
SUNNY LANE	CHERI CIRCLE	DEAD END	0.20	30	15	MPB	15	15	3
SUNSET TRAIL	BENT TREE DRIVE	DEAD END	0.25	50	20	P	24	24	1
SUNSHINE ROAD	GIZZARD CREEK ROAD	DEAD END	0.40	50	20	T/G	24	24	1
SWEETENS COVE ROAD	HWY 72	DEAD END	8.10	28	18	P	20	20	1
SWEETWATER ROAD	SHIRLEY LOOP	WHITWELL CITY LIMITS	0.40	27	15	MPB	19	19	3
TANYA DRIVE	HWY 28	ROBBIE DRIVE	1.10	50	20	P	24	24	1
TATE COVE ROAD	BATTLE CREEK ROAD	DEAD END	0.50	18	10	G	13	13	4
TATE LANE	HWY 28	TATES ROAD	0.30	20	18	C/M	18	18	2
TATE ROAD	JUMPOFF MTN ROAD	DEAD END	1.40	15	12	C/M	12	12	3

Road	Beginning	Ending	Length (MI)	Right Of Way (FT)	Surface Width	Surface Type	Roadbed (FT)	Road Comm	Class
TATES ROAD	OLD DUNLAP ROAD	HWY 28	0.60	27	20	P	24		1
TAYLOR ESTATES ROAD	EAST VALLEY ROAD	DEAD END	0.20	50	20	P	30		1
TAYLOR ROAD	SO PITTSBURG MTN ROAD	FRANKLIN COUNTY LINE	0.30	17	12	C/M	15		3
TEAGUE CEMET ROAD	ALVIN YORK HWY	DEAD END	0.40	12	9	P	10		4
TEAGUE ROAD	ALVIN YORK HWY	WHITWELL CITY LIMITS	1.60	20	12	P	17		3
THOMAS ROAD	BLUEBIRD LANE	DEAD END	0.70	20	16	C/M	18		2
THREE FORKS ROAD	WOODALL POINT DRIVE	DEAD END	0.40	50	16	P	20		1
THREE FORKS ROAD	THREE FORKS RD	CUL-DE-SAC	0.40	50	18	P	20		1
THURMAN DRIVE	CHOCTAW TRAIL	DEAD END	0.20	18	8	T/G	10		4
TIMBER RIDGE DRIVE	KIMBALL CITY LIMITS	DEAD END	0.40	50	20	P	20		1
TOM NORMAN ROAD	BATTLE CREEK ROAD	DEAD END	0.40	22	10	T/G	18		2
TONY ROLLINS ROAD	OLD DUNLAP ROAD	DEAD END	0.10	16	10	C/M	10		4
TRAM ROAD	HWY 150	PRYOR RIDGE ROAD	1.00	23	10	P	20		2
TRANQUIL ACRES	SEQUATCHIE MTN ROAD	DEAD END	2.30	27	12	P	22		1
TRUSSELL RD	MONTEAGLE CITY LIMITS	DEAD END	1.80	30	18	P	25		2
TRUSSELL ROAD	POCKET ROAD	DEAD END	0.30	50	15	MPB	18		3
TUDER LANE	HICKS HOLLOW ROAD	DEAD END	0.20	15	12	P	12		3
TURNABOUT ROAD	KILGORE-GOFORTH ROAD	DEAD END	0.20	12	10	MPB	12		4
TURNER ROAD	BRUCE ROLLINS ROAD	DEAD END	0.10	19	11	MPB	16		4

Road	Beginning	Ending	Length (MI)	Right Of Way (FT)	Surface Width	Surface Type	Roadbed (FT)	Road Comm	Class
UNITED CIRCLE	SHELLMOUND ROAD	SHELLMOUND ROAD	0.60	37	20	P	30		1
UPPER FIRETOWER ROAD	HWY 150	DEAD END	0.40	28	10	T/G	14		3
VALLEY BROOK TRAIL	CROSSROADS CITY LIMITS	DEAD END	0.40	12	10	C/M	10		4
VALLEY VIEW HWY	JASPER CITY LIMITS	WHITWELL CITY LIMITS	8.00	50	20	P	24		1
VANDERGRIF ROAD	ALVIN YORK HWY	DEAD END	0.40	15	10	P	12		3
VICTORIA COMM CNT RD	KETNER MILL ROAD	SUMMERS ROAD	0.10	18	16	C/M	16		2
VILLAGE DRIVE	KETNER MILL ROAD	DEAD END	0.10	50	20	P	24		1
VINEYARD POINT ROAD	SEQUATCHIE MTN ROAD	DEAD END	1.00	25	14	P	19		2
W. FRANCIS SPRING RD	HWY 28	KETNER MILL ROAD	3.10	25	15	P	16		3
WASHA LANE	GAME RESERVE ROAD	DEAD END	0.30	18	15	P	15		3
WATER FALL ROAD	MAY ROAD	DEAD END	0.60	15	15	P	15		3
WATER TANK ROAD	OLD WHITESIDE ROAD	DEAD END	0.20	12	8	T/G	10		4
WEBSTER ROAD	OLD DUNLAP ROAD	DEAD END	0.20	12	10	C/M	12		4
WELLS LANE	LADDS SWITCH ROAD	DEAD END	0.20	12	12	P	12		4
WELLS STREET	MONTEAGLE CITY LIMITS	DEAD END	0.60	15	10	P	12		4
WEST VIEW DRIVE	LODGE POINT ROAD	DEAD END	0.10	50	20	T/G	22		1
WESTLEY ROAD	SEQUATCHIE COUNTY LINE	DEAD END	0.20	18	12	P	12		3
WESTMORELAND ROAD	LADDS SWITCH ROAD	DEAD END	0.20	25	22	P	23		1
WHISPERING WAY	LODGE POINT ROAD	CUL-DE-SAC	0.10	50	20	T/G	24		1



Road	Beginning	Ending	Length (MI)	Right Of Way (FT)	Surface Width	Surface Type	Roadbed (FT)	Road Comm	Class
WHITE OAK TRAIL	TRANQUIL ACRES	DEAD END	0.10	50	12	P	12	0	0
WHITE ROAD	MT CALVARY ROAD	DEAD END	0.30	15	12	P	12	3	3
WHITESIDE LOOP	HIGHWAY 134	HIGHWAY 134	0.30	15	12	P	12	3	3
WILD HEART LANE	OLD SEWANEE ROAD	DEAD END	0.60	50	20	P	24	1	1
WILEY ROSS ROAD	VALLEY VIEW HWY	W. FRANCIS SPRING RD	1.30	34	21	P	26	1	1
WILKINS ROAD	LAKESHORE DRIVE	DEAD END	0.30	30	16	P	18	2	2
WILLIE ANDERSON ROAD	BATTLE CREEK ROAD	DEAD END	0.80	25	12	C/M	15	3	3
WILMA DRIVE	NICKAJACK CIRCLE	DEAD END	0.20	50	20	P	24	1	1
WILSON ROAD	HWY 41	DEAD END	0.30	12	10	P	12	4	4
WINDING STAIRS ROAD	BROWNS TRACE ROAD	CUL-DE-SAC	0.33	50	18	T/G	25	1	1
WINDING WAY ROAD	GRIFFITH HWY	DEAD END	0.70	50	18	T/G	20	2	2
WINDSTONE DRIVE	GIZZARD CREEK ROAD	GRUNDY CO. LINE	0.10	50	20	T/G	24	1	1
WOODALL POINT DRIVE	S. PITTSBURG MOUNTAIN RD	DEAD END	0.80	50	20	MPB	22	1	1
WOODLAND ROAD	COPPINGER COVE ROAD	DEAD END	0.20	50	20	T/G	24	1	1
WOODLAND WAY	CUMBERLAND ROAD	DEAD END	0.10	50	20	P	25	1	1
WORLEY LANE	HWY 108	DEAD END	0.60	32	20	P	25	1	1
WYMAN LANE	VALLEY VIEW HWY	DEAD END	0.20	12	9	P	12	4	4

**Total Mileage 348.69**